



Newsletter



Loose Parts Play

The Loose Parts Play-Pod is a wonderful place for children to explore their imagination and creativity and has definitely been getting a work-out recently! The tyre challenge is a popular activity facilitated by our wonderful Educators. The tyre challenge is an adaptable activity where the children are challenged to make absolutely anything creative out of tyres at the Play Pod.

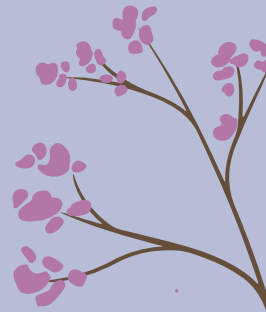
During the creative process, the children asked if they could use other loose parts materials as well as tires to make a base for their (imaginary) police force. After observing the creation, the final product was very cool and resembled a base of operations! They enjoyed role-playing as police force characters and handed out some hefty fines to (imaginative) offenders!

This learning activity is a great example displaying how popular our loose parts play has become. It highlights the endless possibilities and benefits of loose parts play for children's learning and development.





Newsletter



2023 Enrolments

Enrolments for 2023 are now open! Click [here](#) to review the steps you need to do to enrol your child into Wilston Kids Care for 2023.



Christmas Closure Dates

Please be aware that Wilston Kids Care will be closed from Monday 19 December 2022 and will re-open in the New Year from Tuesday 3 January 2023 for some more Vacation Care fun!



Christmas

CLOSURE DATES

Monday 19 December 2022-
Monday 2 January 2023

VACATION CARE OPENING DATES

12 December 2022-
16 December 2022

3 January 2023-
20 January 2023



Newsletter



Healthy me vitamin C!

As you know the children here at WKC are happy and healthy children and yesterday was no exception! Our amazing chef Lyndall is an absolute whiz at cooking up healthy food options from Pasta to Muesli slice and of course having all the fresh seasonal fruit available daily such as oranges, bananas, and watermelon! As you can see, the oranges are a big hit to help cool the children down from the afternoon heat and they also provide a great source of entertainment whilst eating them!



B-Block Mask Madness

Last Friday afternoon in our B-Block art studio, the children put their creative craft skills to the test creating fabulous face masks such as superhero's, dragons, unicorns and much much more. They used Texta's, pencils, and crayons to give the masks a very unique and individualised look. After the colouring in was complete the children began carefully cutting out their masks with scissors beginning with the outside and eventually moving their way to the eye holes. It was then time for the last step of the process. Using wool as the headband, they threaded the ends through the holes on the side of the mask and with Educator (Nicole's) assistance. They then secured the wool successfully with a knot using great precision and fine motor control. It's lovely to see these spontaneous, child led activities, created, and brainstormed by the children.



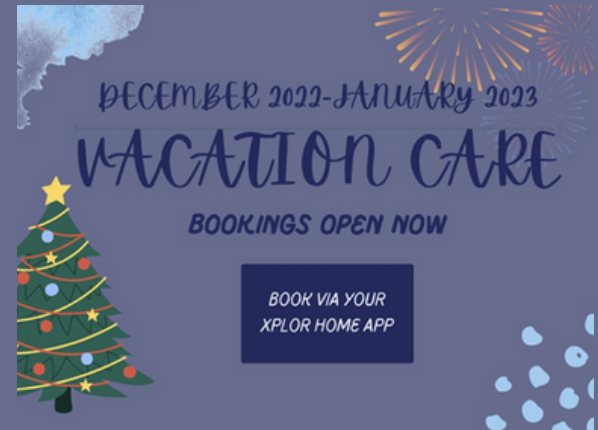


Newsletter



Vacation Care- Bookings

Our December 2022/January 2023 Vacation Care Program has been released and bookings are now open. Bookings can be made through your Xplor Home app.



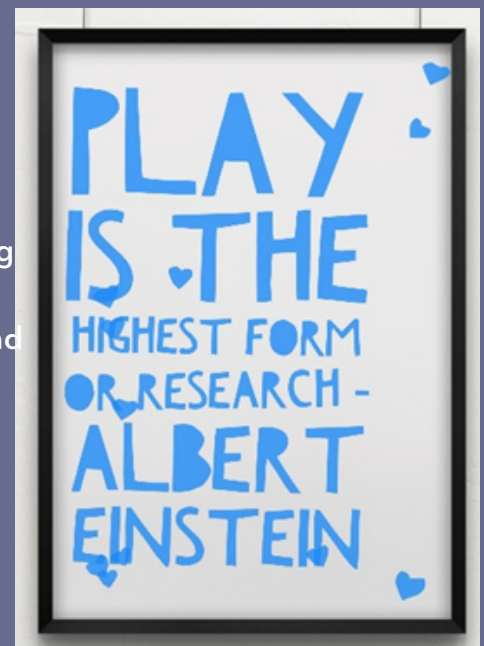
Why is play so important?

Children are born naturally curious and ready to learn. Play is the natural way children develop ideas and learn skills. When they play, children create, experiment, think, communicate, remember, imagine, and try to work out what might happen next.

Here is a great video about how play helps child development, by Catherine Sewell, a play specialist from Victoria: <https://raisingchildren.net.au/.../play-helps-development>

The National Quality Standard (NQS) encourages educators in outside school hours care, to facilitate and extend each child's learning and development. This can be supported through a play-based program by using practice that is thoughtful, intentional, collaborative, and responsive to the everyday flow of experiences and events for children and educators.

When educators collaborate with children to design and implement a play-based program, they are providing children with opportunities to learn as they discover, create, improvise, test theories, imagine and engage with others. For school age children, learning is supported through play and leisure opportunities when educators act with intentionality to build on children's interests and nurture their developing life skills. This can be achieved by ensuring the program complements their experiences, opportunities, and relationships at school, at home and in the community.





Newsletter



Dates for your Diary

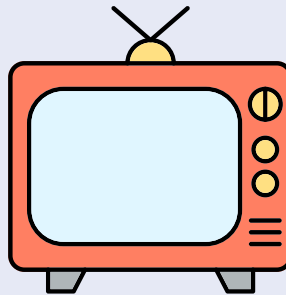
World Children's
Day
20/11/22



World Hello Day
21/11/22



World
Television Day
21/11/22



Fibonacci Day
23/11/22



Remembrance Day
11/11/22

